



# GRADUATE EMPLOYABILITY RANKINGS 2020

The best institutions  
at engaging with employers.





# Building better health

Over 30,000 Victorian children and their communities are pioneering a revolutionary program – offering hope to the world for reducing obesity.

We are in the midst of a chronic disease epidemic; unhealthy food and inactivity have seen populations worldwide at risk of a multitude of health problems, including heart disease, diabetes and stroke.

Researchers at Deakin University are supporting a whole-of-community, region-wide crusade in North-East Victoria, called RESPOND, which addresses the many drivers of childhood obesity.

Building on 15 years of community projects, RESPOND involves four primary care partnerships, 14 health services and over 100 schools in the Ovens, Murray and Goulburn regions of Victoria, working with researchers from the Deakin-based Global Obesity Centre (GLOBE), to deliver hundreds of positive changes that will create healthier food environments and more active lifestyles.

“Placing health at the centre of communities is the best way to create healthy people,” said GLOBE Director Professor Steve Allender.

“Our research shows that improving community capacity is the key driver to reducing childhood obesity. This includes changes to funding models, removing sugary drinks from the canteen, establishing ‘walk to school’ campaigns, and many other efforts led by the community.”

RESPOND is being watched by researchers and policy makers around the world. GLOBE is a World Health Organization (WHO) Centre for Obesity Prevention – determined to improve child health globally.

Connect with Deakin:  
[deakin.edu.au/research](http://deakin.edu.au/research)



Photo: Netball Victoria

# Welcome: QS Graduate Employability Rankings 2020



**Selina Griffin**  
Rankings Manager  
*QS Quacquarelli Symonds*



**Dennis Yu**  
Rankings Analyst  
*QS Quacquarelli Symonds*

Earlier this year the United States of America's Bureau of Labor Statistics announced that the 'quit rate' (the proportion of people leaving or quitting their jobs) was the highest it's been in 15 years and at the third-highest level since 2001. A rate of 2.3% had remained unchanged from June 2018 through June 2019. The quit rate is perceived as an optimistic measure; if someone is leaving their job voluntarily it is thought to be because they have found a better one to go to. People become more confident in leaving their jobs for better pay elsewhere with a significantly fast pace of salary rise anticipated.

Whilst this is only a snapshot of the United States employment market, it offers compelling considerations. The media abounds with stories about poor conditions in the gig economy, the threat posed by automation and artificial intelligence, and the collapse

of household names. Perhaps most notably, one also finds – not infrequently – anxious stories about the saturation of the graduate employment market: a consequence of the steady increase in the proportion of individuals attaining tertiary education.

Consequently, the job market presents an increasingly complicated landscape for graduates to navigate, and providing motivated individuals with serviceable information about that landscape has



always been central to QS's mission. It was back in 2005 that QS first included "Employer Reputation" as an indicator in the World University Rankings. The world has come a long way since then but employability has remained crucial to both students and to QS.

In 2015, QS began its Graduate Employability Rankings exercise. This has allowed us to more closely examine a university's relationship with employers and

its graduates. Our methodology focuses on how connected universities are with employers, how reputed their graduates are among companies worldwide, how likely their graduates are to enter the job market soon after graduation and, finally, the achievements of their most prominent alumni.

This year, the team have made a tremendous effort to expand the number and diversity of the lists we use for our Alumni Outcomes indicator; one of the most original and innovative used in all of any rankings. Over 2,100 universities in 132 locations had an alumnus on one of the lists our team analysed.

The 2020 edition included over 750 institutions, of which more than 680 institutions are ranked and 501 are published, with 36 new entries. The ranking benefits from our growing

---

The **2020 edition** included over **750** institutions, of which more than **680** institutions are ranked and **501** are published, with **36** new entries.

---

database of employer respondents; institutions in our database received close to 240,000 nominations from almost 45,000 employers.

QS also published its second publicly-available report exploring QS Global Employer Survey data. It focuses on the

global graduate skills gap and reveals the misalignment between employer and student expectations. Stephen Isherwood, the CEO of the Institute of Student Employers in the UK, acknowledges the importance of the insights offered by this exercise: "The pace of change in the workplace is ever increasing, so graduates need to ensure they are developing the skills and abilities that will not only empower them to land the job of their choice, but allow them to thrive as their career develops."

We hope that the 2020 edition of the QS Graduate Employability Rankings proves to be illuminating and informative.

# A NEW EDUCATIONAL MODEL THAT CHALLENGES EXPERIENCES

The educational Model Tec21 assures the development of solid, comprehensive competencies that help to solve, in a creative and strategic manner, the present and future questions.

## Tec 21 components:

→ Challenge-Based Learning

→ Flexibility

→ Memorable Experience

→ Inspiring Professors



**Kangwon National University**

# The Central University of the Unified Korea





# EduData summit

 June 10th - 11th, 2020

 Delegates Dining Room at **The United Nations**, New York, United States

## Data & analytics in higher education

Learn the best tools and practices to manage your data towards increasing efficiencies and improving processes within your university and business schools.

**Early-bird tickets available now**

**Secure your place at**  
[www.edudatasummit.com](http://www.edudatasummit.com)

## QS Rankings Summit

Taking place on June 12th, this is a unique one-day seminar in which industry experts will provide insights on how to maximize your institution's potential, measured by the QS methodologies used to create the QS World University Rankings.

**More information**  
[www.edudatasummit.com](http://www.edudatasummit.com)

Powered by:





YONSEI UNIVERSITY

Seoul, Korea

# YONSEI UNIVERSITY ADVANCES AS BIOCLUSTER HUB

Yonsei University continues to pursue innovation through cutting-edge research in biotechnology and information technology at the Yonsei International Campus in Songdo, Incheon.

---

[www.yonsei.ac.kr](http://www.yonsei.ac.kr)



@yonsei.eng



Yonsei University





# Method: QS Graduate Employability Rankings 2020



Rankings team  
QS Quacquarelli Symonds

The increasing cost of higher education, combined with the increasing saturation of degree-holding graduates in today's employment market, means that students are becoming increasingly concerned with the extent to which their tertiary education experience will provide them with a long-term return on investment. To ensure that students are able to make informed decisions regarding their study choices, QS believe that high-quality, independently-verified data is imperative.

It is also clear, however, that graduate employment rate is an inadequate means of capturing the complex interrelationship between student behaviour, university choice, and career outcomes. It is this principle that determined our decision to construct a new, bespoke ranking focusing on graduate employability, with a unique, multivariate method that more accurately identifies the extent to which

a given university is a determinant of employability. This method utilises five key indicators:

## 1. Employer Reputation

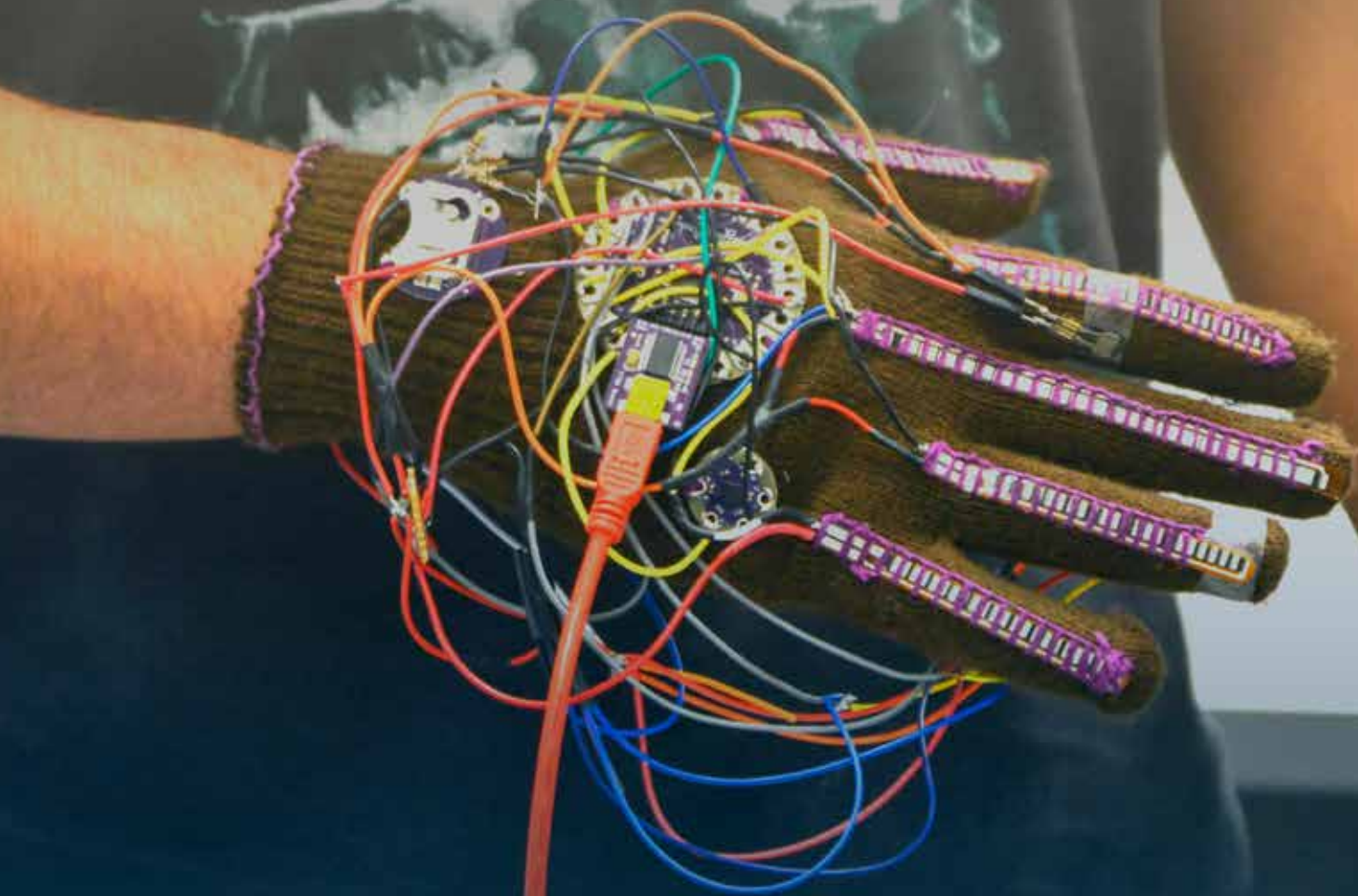
(30% of an institution's final score)

QS believe that one of the best ways to identify institutions that have a strong record of success as far as nurturing employability is concerned is to consult those who are the beneficiaries: employers. The QS Employer Survey – proprietary, and the largest of its kind in the world – accounts for the insights of almost 45,000 hiring managers and other employer representatives across the globe, enumerating those universities that employers believe produce the most talented, competent, employable graduates. The survey's scope continues to grow in size, remains a robust measure of employer sentiment, and is the determinant of our Employer Reputation indicator.



PRINCE MOHAMMAD BIN FAHD UNIVERSITY  
Al-khobar Eastern Province Saudi Arabia

PMU



Creative Minds ..  
Transform the World

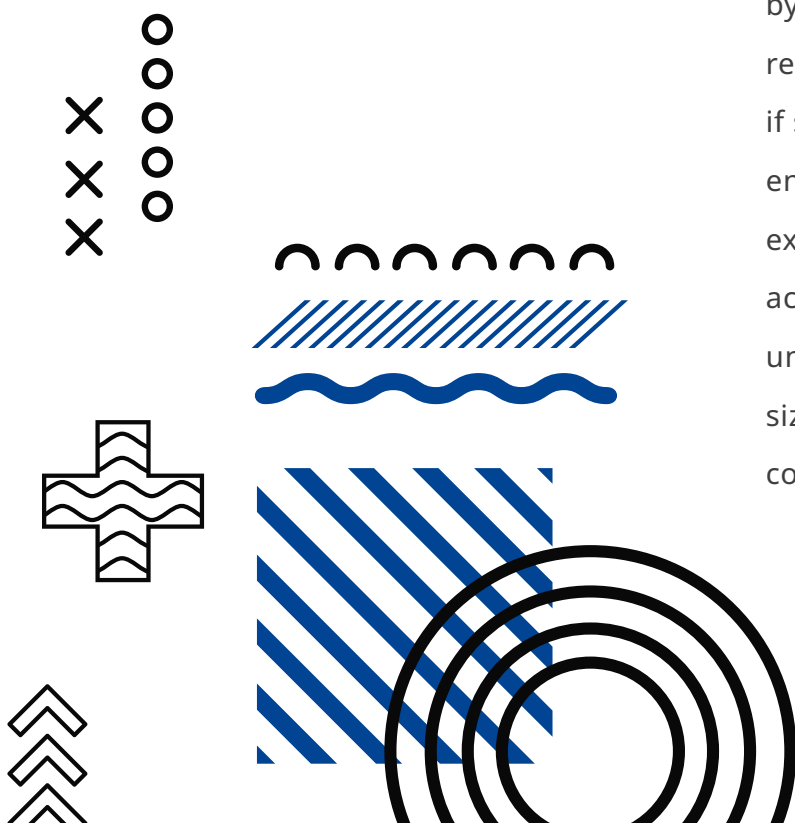
[pmu.edu.sa](http://pmu.edu.sa)

 PMU\_KSA

## 2. Alumni Outcomes

(25%)

Students who have invested considerable additional time and expense into upskilling themselves aren't simply seeking a job: they're seeking a career. Our Alumni Outcomes indicator identifies those universities most likely to produce graduates that go on to be luminaries in their field. To do so, our Intelligence Unit analysed data from over 130 lists of highly successful individuals, comprising over 55,000 records pertaining to 29,000 individuals. Over 2,100 institutions provided at least one individual alumnus to these lists, and care was taken to ensure that the dataset was global and multisectoral.



## 3. Partnerships with Employers

(25%)

Here, we start to examine what universities do to engage with employers more closely. First, we use Elsevier's Scopus database to establish which universities are doing most to forge research partnerships with employers – and those that are most successful in ensuring that these partnerships yield citable, transformative research. Only distinct companies producing two or more collaborative papers in a five-year period (2013-2017) are included in the count. This year's ranking accounts for university collaborations with 2,000 top global companies, as listed by Fortune and Forbes.

Second, it considers work placement-related partnerships that are reported by institutions and validated by the QS research team – crucial partnerships if students are to enjoy employability-enhancing internships and work experience. Both figures are adjusted to account for the number of faculty at each university to avoid institutions of larger size receiving undue advantage, and then combined into a composite index.

## 4. Employer-Student Connections

(10%)

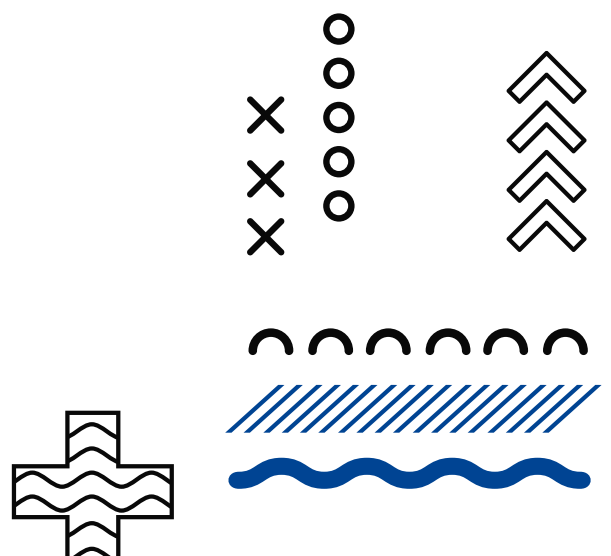
It is a common adage that life outcomes can be attributed as much to who one knows as what one knows – an adage that emphasises the importance of one’s network. It follows that universities keen to actively augment their student’s chances of successful employment should attempt to ensure that influential employers are frequently present on campus, giving the aware student the possibility to meet face-to-face with those that can valuably expand their network. Such events also ensure that students can, if motivated and aware, acquire crucial insider information about how to make themselves more hireable.

The Employer-Student Connections indicator fulfils this role, summing the number of individual employers who have been actively present on a university’s campus over the past twelve months. This ‘active presence’ may take the form of participating in careers fairs, organizing company presentations, or any other self-promoting activities. This count is adjusted by the number of students, accounting for the size of each institution.

## 5. Graduate Employment Rate

(10%)

While this indicator is simple and reductionist, it is also essential for any nuanced understanding of how successful universities are at nurturing employability. We measure the proportion of graduates (excluding those opting to pursue further study or unavailable to work) in full or part time employment within 12 months of graduation. To calculate the scores, we consider the difference between each institution’s rate and the average in the country in which they are based. To preclude significant anomalies, the results are adjusted by the range between the maximum and minimum values recorded in each country or region. This accounts for the fact that a university’s ability to foster employability will be affected by the economic performance of the country in which they are situated.



# JEJU NATIONAL UNIVERSITY

To the Basic, For the Future



**JEJU** NATIONAL  
UNIVERSITY

## Contact

102 Jejudaehak-ro, Jeju-si, Jeju Special Self-Governing Province,  
63243, Republic of Korea  
[www.jejunu.ac.kr](http://www.jejunu.ac.kr)



# WORLDWIDE

*Eastern Europe & Central Asia*

19–20 September 2019

Al-Farabi Kazakh National University

Almaty, Kazakhstan

**Journey to Global Prominence: Harmony of  
Human Heritage and Advanced Technology**

Register now at

[www.qsworldwide.org](http://www.qsworldwide.org)



Organizing Partner



We are looking for Dark Matter and  
seeking answers to the 100 most  
important questions in modern science

[www.nsu.ru](http://www.nsu.ru)

**N\*** Novosibirsk  
State  
University  
**\* THE REAL SCIENCE**

CHUNGBUK NATIONAL UNIVERSITY

# A Dynamic Future

Through collaboration  
of the university's community



1

Ranked number 1  
for 5 years in a row  
in student satisfaction

2014~2018

8<sup>th</sup>

Selected  
as a startup-leading  
hub university

Highest rating for 8 straight years

68<sup>th</sup>

Anniversary of  
CBNU's foundation

248

CBNU signed an MOU  
with about 248 universities  
around the world

1,442

The number of  
foreign students studying at  
CBNU in 2018



CHUNGBUK  
NATIONAL UNIVERSITY





*in conversation*

An aerial photograph of Kaunas, Lithuania, showing a mix of historic brick buildings with red roofs and modern structures. A large river, the Neris, flows through the city, and a bridge is visible on the right side. The sky is blue with some clouds.

# KAUNAS

LITHUANIA

14-15 OCTOBER 2019

ENHANCING VISIBILITY THROUGH  
INTERNATIONAL COOPERATION: MOBILITY,  
RECOGNITION, BRANDING

ORGANISING PARTNERS:



VYTAUTAS  
MAGNUS  
UNIVERSITY  
MCMXXII

[www.qsinconversation.com](http://www.qsinconversation.com)



PUSAN  
NATIONAL UNIVERSITY



BUSAN  
(KOREA)



# Follow your dreams and achieve your aspirations!

Korea's first national university with 73 years of tradition,  
Pusan National University, has taken a leap forward  
to become a top global research university with a great reputation.

You can realize your great potential,  
and have the future you desire at Pusan National University.

PUSAN NATIONAL UNIVERSITY

# Overview: QS Graduate Employability Rankings 2020



**Martin Ince**  
Writer & journalist in  
higher education & science

University study has become *de rigeur* for young adults throughout the developed world. In the developing world too, individuals increasingly see a degree as the key to a good life, while governments want a more educated workforce. While people study for many reasons, including the simple love of learning, polling around the world shows that the hope of a more successful, more fulfilling, more remunerative career is the main incentive driving ever-greater numbers of young people to university.

Hence the importance of the QS Graduate Employability Rankings (the GER), whose 2020 edition is published today. It names the world's top 500 universities, evaluated according to their ability to nurture successful careers for their graduates. Uniquely among rankings of its kind, it does not simply measure outputs – graduate employment rate, salary after one year – but also measures inputs, like the work that universities do

to give their students the chance to meet prospective employers. In doing so, we hope to offer students and parents more holistic data about an issue of increasing salience to them. These rankings sit alongside our overall World University Rankings and our World University Rankings by Subject as an increasingly extensive portfolio examining university performance across the world.

Our findings for 2020 show that world-renowned American universities are still world champions at facilitating the careers of their students. In first and second place are the Massachusetts Institute of Technology and Stanford, also one and two respectively in the current overall QS World University Rankings. Outperforming its overall World University Rankings position is the University of California at Los Angeles (UCLA). UCLA is 35 in the WUR, and its prominence here proves that the methodology used to create this ranking

# Pride & Hope

Cherish the Truth, Enlighten the World

# CHONNAM NATIONAL UNIVERSITY

Democracy, Human rights  
Justice, Freedom & Peace

Gwangju,  
The May 18 Democratic Uprising

16  
colleges

11  
graduate schools

96  
departments

1,260  
faculty members

32,309  
students

146.2 million USD  
total research funds

1,837  
research projects

521 universities in 59 countries  
international scholarly exchange programs

2,011  
international students



CHONNAM NATIONAL UNIVERSITY

does indeed fulfil one of its crucial *raison d'être*: providing a unique lens on employability that does not simply replicate the hierarchies identified by overall World University Rankings. The rank achieved by Australia's University of Sydney – fourth here but 42nd in the WUR – offers similar proof of a distinctive – and distinguishing – perspective.

In addition, we see that the US has only four entries in the top 10 of this table – the three aforementioned, plus Harvard in fifth. The others are in the UK, Australia, mainland China and Hong Kong.

The GER is assembled according to five indicators. They incorporate hundreds of thousands of proprietary data points, including opinion from 45,000 employers, results from over 40,000-degree programs, and material on 320,000 work placement partnerships.

The first of our five indicators is familiar to anyone who has tracked the QS rankings over time. It is derived from our unique global poll of active recruiters, whom we ask to name the top institutions from which they seek to hire graduates. Harvard in the US is top on this measure, followed by Cambridge in

the UK. This indicator accounts for 30 per cent of each university's possible score.

Next, we measure alumni outcomes, an indicator designed to go further than graduate employment rate in capturing the success of a university's graduates in their careers – not simply whether they have one at all. It is based on our analysis of the university backgrounds of 29,000 high-achievers. They include leaders of public and private companies as well as medal and award winners in an extensive range of fields in which human endeavor is conducted. This indicator is weighted at 25 percent.

The net measure, also weighted at 25 per cent, captures how closely universities and business work together. It is derived from data including the frequency with which research papers which have been collaborated upon by both university and business authors appear in Elsevier's Scopus database of academic publications.

The final 20 percent of each institution's possible score comes equally from two indicators. The first we term "employer-student connections." This is a measure of the recruiter presence on each university campus, including the number present at job fairs in a given year. And

finally, we have graduate employment rate, a measure of how many alumni are working a year after graduation, but excluding some groups such as those undertaking further study. While a year is a short time in a career, we believe this is a good measure of each university's ability to produce graduates who are prepared to successfully enter the workplace shortly after graduation.

## **Illuminating institutional excellence**

Because employment patterns are now changing fast, it is no longer possible to say what employability will look like in a few years. We expect to see more older people at university, who will come to tertiary education with different expectations of their institution of study than traditional students. Furthermore, demographic stagnation – and decline – in a number of established higher education markets, compounded by reduced public tertiary education funding in many of them, means that institutions will be competing more vigorously for students.

This year's top 500 universities for graduate employability come from 71 locations. While 84 of the 500 are in the US and a further 49 in the UK,

there is still strong representation from numerous other higher education systems – from Argentina to Vietnam. For example, we list universities in Egypt, the United Arab Emirates, Lebanon and elsewhere in the Middle East that might be an affordable alternative to study elsewhere. Many are better-placed in this ranking than in the WUR, or do not appear there at all.

A look at the top 50 universities listed here shows the GER's scope for some surprise. No fewer than 23 are at least ten places higher than their position in the WUR, with noteworthy differences for institutions such as Waterloo in Canada, Waseda in Japan and Karlsruhe in Germany. Six are at least ten places lower. As in our overall flagship exercise, however, the United Kingdom's narrative is negative, with University College London, Imperial College London, Manchester and Edinburgh among those whose overall performance is markedly superior to their employability one. The 2020 QS Graduate Employability Rankings provides a timely reminder that, when students seek to find the perfect university for their career goals, the most famous name is not always the most suitable one.



GYEONGSANG  
NATIONAL  
UNIVERSITY

THE POWER OF A PIONEERING SPIRIT,  
KEEPING PACE WITH THE WORLD!  
PIONEERS WHO WILL LEAD THE FUTURE!



경상대학교  
GYEONGSANG NATIONAL UNIVERSITY

501, JINJU-DAERO, JINJU-SI, GYEONGSANGNAM-DO,  
REPUBLIC OF KOREA

# QS PARTNERS WITH INSTITUTIONS AROUND THE WORLD

to meet strategic objectives, manage international partnerships, and inform strategies through evidenced-based decision making.

With our bespoke, data-rich services, institutions can:



Enhance  
**strategy**



Optimize  
**reputation**



Improve  
**performance**



Boost  
their  
**brand**



Improve  
**internationalization**  
& recruitment efforts

Find out more at  
[www.qs.com](http://www.qs.com)







# Come to HUFS Meet the World

Hankuk University of Foreign Studies (HUFS)

## Hankuk University of Foreign Studies, Leading a Globalized Korea

Hankuk University of Foreign Studies (HUFS), since its foundation in 1954, has been at the forefront of Korea's development, often dubbed the Korean miracle, serving as a pioneer and driving the economic growth and globalization of Korea. HUFS, a truly global university that fosters innovative leaders of the future.

### Designated as a Specialized Educational Institution for Critical Foreign Languages

The enactment of the Critical Foreign Languages Education Act has expanded the platform for HUFS students majoring in critical foreign languages such as Vietnamese, Arabic, and Portuguese to grow into area specialists by gaining knowledge and experience transnationally. HUFS's prestige as the leading global university in Korea has been enhanced through university-wide academic programs such as HIMUN (HUFS International Model United Nations), which marks its 43rd anniversary this year, and a wide range of globalization programs which include the '7+1 Student Dispatch Program' where students study at overseas universities for one term, 'Honors Program for Area Specialists' to train and nurture area specialists with knowledge and practical experience, and a global internship program under which over 300 students gain on-the-ground overseas work experience annually.

- **Global Education Infrastructure**  
HUFS teaches 45 languages in 52 language majors
- **Academic Exchange Agreements**  
Signed with 832 universities and institutions in 98 countries
- **International Exchange Programs**  
Number of HUFS students dispatched overseas : 1,843  
Number of international students placed at HUFS : 636

### Departments that Foster Global Leaders Prepared for the Ubiquitous High-Tech Era with a Convergence Mindset

- **EICC (English for International Conferences and Communication) Department**  
The best Interpretation and Translation Curriculum in Korea
- **ELLT (English Linguistics & Language Technology) Department**  
The first-ever department that combines language and technology in Korea
- **LD (Language & Diplomacy) Division**  
An 'Elite Diplomat Academy' that nurtures future diplomats with the full range of competencies exemplified by HUFS
- **LT (Language & Technology) Division**  
An 'Elite Trade Academy' that leads global industries and international trade
- **GBT (Global Business & Technology) Division**  
Equips students with English language skills, IT capabilities, and a business mindset to become business leaders in the 21st century
- **BME (BioMedical Engineering) Division**  
Fosters education that integrates the biomedical and engineering fields by fully utilizing IT

### HUFS, A Global Hub at One with the World, has been visited by prominent political leaders

Starting with former President Washington Beltran of Uruguay in 1975, HUFS has had the honor of hosting heads of state from around the world such as Hungary, Poland, Mongolia, Portugal, and Indonesia, and most recently former President Barack Obama of the United States in 2012, not to mention Ministers and Vice Ministers of Foreign Affairs, Prime Ministers, Speakers of Upper Houses, and Speakers of Parliaments from many nations.

#### – Heads of state who visited HUFS (44 visits in total paid by heads of state, including 22 former and incumbent Presidents)

- Barack Obama, former President of the United States (2012)
- Mikhail Gorbachev, former President of the Soviet Union (2001)
- Joko Widodo, President of Indonesia (2018)
- Anibal Antonio Cavaco Silva, former President of Portugal (2017)
- Tsakhiagiin Elbegdorj, former President of Mongolia (2016)
- Bronislaw Komorowski, former President of the Republic of Poland (2013)
- Laura Chinchilla Miranda, former President of Costa Rica (2012)
- Pal Schmitt, former President of Hungary (2012)
- Abdullah Gul, former President of Turkey (2010)
- Georgi Sedefchov Parvanov, former President of Bulgaria (2009)
- Lech Kaczynski, former President of the Republic of Poland (2008)
- Traian Basescu, former President of Romania (2008)
- Elias Antonio Saca, former President of El Salvador (2006)
- Leonel Fernandez, former President of the Dominican Republic (2006)
- Traian Basescu, former President of Romania (2005)
- Joseph Kabila Kabange, former President of the Democratic Republic of the Congo (2005)
- Stanislav S. Shushkevich, former President of Belarus (2004)
- Ernesto Samper Pizano, former President of the Republic of Colombia (1996)
- Zheiyu Mitez Zhelev, former President of Bulgaria (1995)
- Alberto Kenya Fujimori, former President of the Republic of Peru (1993)
- Fidel Sanches Hernandez, former President of El Salvador (1982)
- Washington Beltran, former President of Uruguay (1975)



HANKUK UNIVERSITY  
OF FOREIGN STUDIES



**116**  
International  
Accredited  
Programs

More than  
**150,000**  
Regular and Online Learning Students

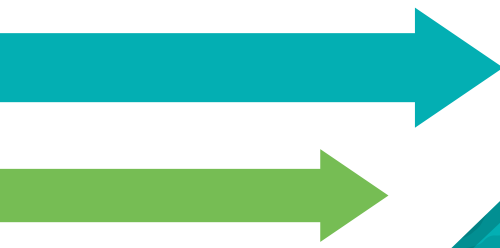
  
**28**  
Science  
Faculties

**28**  
Research  
Centers

  
**165**  
Specialized  
Educational  
Programs

**VISION**  
World Class  
University with  
sustainability and  
community  
engagement

**Mission**  
Community  
Responsibility :  
Knowledge Development,  
Research, Innovation and  
Entrepreneurship



جامعة الملك عبدالعزيز  
King Abdulaziz university

Jeddah, Saudi Arabia  
www.kau.edu.sa



2020 Rank	Institution	Location	Employer reputation	Alumni Outcomes	Partnerships with Employers	Employer - Student Connections	Graduate Employment Rate	Overall
1	Massachusetts Institute of Technology (MIT)	United States	100.0	100.0	99.4	96.4	87.1	100.0
2	Stanford University	United States	100.0	100.0	100.0	96.4	71.5	98.6
3	University of California, Los Angeles (UCLA)	United States	98.8	99.8	98.2	82.8	91.2	98.3
4	The University of Sydney	Australia	95.6	93.8	98.4	99.2	95.9	98.0
5	Harvard University	United States	100.0	100.0	98.7	76.3	87.5	97.8
6	Tsinghua University	China (mainland)	99.3	85.8	99.8	99.6	76.9	95.6
7	The University of Melbourne	Australia	98.2	94.4	93.8	71.6	95.7	94.9
8	University of Cambridge	United Kingdom	100.0	99.9	86.5	90.8	72.4	94.6
9	University of Hong Kong (HKU)	Hong Kong SAR	84.6	92.3	98.9	94.7	99.6	94.3
10	University of Oxford	United Kingdom	100.0	100.0	87.2	85.9	68.4	93.9
11	New York University (NYU)	United States	91.2	99.8	94.1	81.1	77.7	93.4
12	Cornell University	United States	87.9	99.3	93.6	88.6	71.5	92.3
13	Yale University	United States	99.7	99.9	78.0	76.8	82.0	91.9
14	University of Chicago	United States	88.7	94.1	99.1	47.2	99.9	91.3
15	Princeton University	United States	96.0	99.2	74.4	83.6	88.1	91.0
16	University of Toronto	Canada	93.4	98.5	99.6	50.4	64.9	90.7
17	ETH Zurich (Swiss Federal Institute of Technology)	Switzerland	97.4	85.6	90.7	52.2	98.7	90.0
18	Ecole Polytechnique	France	99.2	85.8	75.1	79.5	97.9	89.3
19	Peking University	China (mainland)	99.2	93.0	75.5	80.9	73.8	89.0
20	University of Pennsylvania	United States	91.8	100.0	79.6	49.1	93.4	88.3
21	Columbia University	United States	96.7	100.0	89.1	57.6	-	87.9
22	UCL (University College London)	United Kingdom	98.0	90.2	86.4	61.4	65.4	87.8
23	The University of Tokyo	Japan	99.2	97.5	94.6	-	70.2	87.5
24	National University of Singapore (NUS)	Singapore	99.2	97.7	84.8	58.0	-	86.8
25	University of Waterloo	Canada	70.1	84.8	97.8	85.9	81.8	85.0
26	University of Michigan	United States	88.1	97.9	99.9	-	-	84.2
27	The University of New South Wales (UNSW)	Australia	95.7	95.2	82.9	-	68.7	83.5
28	Seoul National University (SNU)	South Korea	92.9	97.6	82.9	-	-	82.4
29	Fudan University	China (mainland)	93.8	66.4	82.2	85.3	-	81.7
30	Duke University	United States	72.3	96.2	90.0	-	69.3	81.0
30	Imperial College London	United Kingdom	99.9	83.3	93.5	-	-	81.0
30	Northwestern University	United States	70.2	96.3	85.7	46.8	83.1	81.0
33	Pontificia Universidad Católica de Chile	Chile	91.5	89.2	75.9	-	90.2	80.5
34	Waseda University	Japan	82.1	77.7	75.4	87.0	71.8	80.2
35	Zhejiang University	China (mainland)	81.7	41.1	99.7	99.5	75.6	78.6
36	KIT, Karlsruher Institut für Technologie	Germany	89.7	47.4	95.8	46.2	92.4	78.0
37	Delft University of Technology	Netherlands	85.6	54.4	94.5	70.3	65.3	77.9
38	Purdue University	United States	59.7	64.4	94.5	98.3	81.4	77.0
39	Carnegie Mellon University	United States	73.7	72.7	97.5	82.6	-	76.1
40	Tecnológico de Monterrey (ITESM)	Mexico	80.2	90.6	-	97.6	96.5	76.0
41	Politecnico di Milano	Italy	86.2	34.5	98.3	51.9	99.9	75.6
41	The University of Manchester	United Kingdom	97.2	69.5	78.6	-	-	75.6
43	Shanghai Jiao Tong University	China (mainland)	91.8	52.0	79.5	-	78.5	74.0
44	Georgia Institute of Technology (Georgia Tech)	United States	71.7	64.8	92.0	92.0	-	72.4
45	London School of Economics and Political Science (LSE)	United Kingdom	99.8	98.7	-	96.1	-	71.2
46	Johns Hopkins University	United States	52.8	85.9	86.2	-	71.5	70.9
47	Brown University	United States	49.0	94.6	65.5	64.0	82.7	70.7
48	University of Edinburgh	United Kingdom	90.4	56.6	77.1	60.7	-	69.6
49	University of North Carolina, Chapel Hill	United States	39.1	75.2	96.2	73.4	-	69.5
50	Keio University	Japan	71.7	81.4	64.7	-	79.4	69.2



# Consulting Services

*Tailor-made solutions that provide institutions with data insight, strategic tools and the best practices necessary to become national, regional and global leaders.*

## Core Competencies

Global Engagement

Research Performance

Partnerships

Strategic Planning

Rankings Performance Insight

Workshops

Focus Groups

Branding



Learn more at [www.qs.com](http://www.qs.com)



The Platform for Empathy and Innovation

# JEONBUK NATIONAL UNIVERSITY



Chonbuk National Univ changes its name to Jeonbuk National Univ (JBNU) for a best glocal univ from 2019

Central Plaza of JBNU

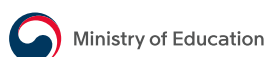
JBNU is located in the heart of Jeonju, a top 3 tourist city in Asia introduced by CNN 'the City'.



#2 among the 9 KNUs  
all through 2014-2019



#1 satisfaction among  
Korean universities 2017



#2 support per student  
among 9 KNUs 2017-2018



One and only Asian  
branch of US LANL



5<sup>th</sup> high-enthalpy plasma  
laboratory in the world



**UniKL**  
UNIVERSITI  
KUALA LUMPUR



**BE BOLD  
BE UNIKL**

# Where Knowledge Is Applied And Dreams Realised



Electrical Engineering, Electronics Engineering Technology, Telecommunication Technology and Medical Electronics



Mechanical Engineering, Mechatronics, Manufacturing, Applied Electronics and Automotive Technology



Design, Manufacturing and Engineering Business Management



Information Technology, Networking System, Multimedia and Animation



Medicine, Pharmacy and Health Sciences



Medical Science Technology



Aviation and Aircraft Maintenance Technology



Marine Engineering Technology



Accounting, Business Administration, Entrepreneurship, Islamic Finance, International Business, Management, Marketing and Tourism



Welding, Air Conditioning and Industrial Refrigeration, Mechanical Engineering and Industrial Maintenance Technology



Quality Engineering, Process Instrumentation, Facilities Maintenance and Industrial Logistic



Chemical Engineering and Bioengineering Technology

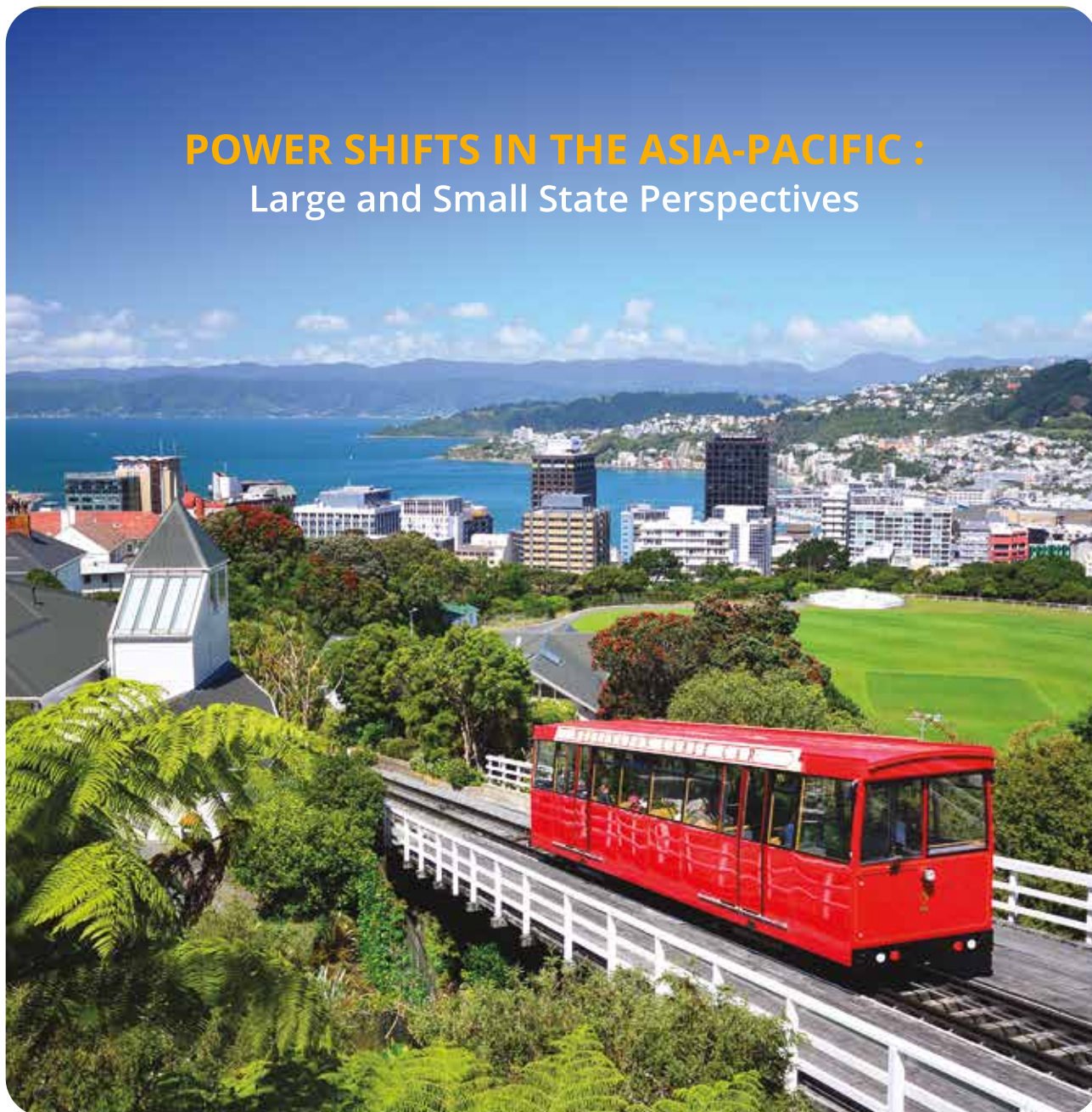


Railway Technology

[www.unikl.edu.my](http://www.unikl.edu.my)



## POWER SHIFTS IN THE ASIA-PACIFIC : Large and Small State Perspectives



19 - 21  
February  
2020



Victoria University  
of Wellington  
**NEW ZEALAND**



REGISTER NOW  
at  
[www.qssubjectfocus.com](http://www.qssubjectfocus.com)



2020 Rank	Institution	Location	Employer reputation	Alumni Outcomes	Partnerships with Employers	Employer - Student Connections	Graduate Employment Rate	Overall
51	American University of Beirut (AUB)	Lebanon	55.1	83.9	53.0	70.2	99.6	69.0
51	University of Leeds	United Kingdom	75.5	37.7	82.3	67.5	84.0	69.0
53	Kyoto University	Japan	91.3	56.8	90.3	-	-	68.6
54	University of Texas at Austin	United States	75.0	74.5	85.7	-	-	68.5
55	University of Wisconsin-Madison	United States	47.8	86.1	79.6	-	79.3	68.2
56	National Taiwan University (NTU)	Taiwan	70.8	94.9	58.2	-	-	68.1
57	The University of Queensland (UQ)	Australia	74.8	48.7	92.6	-	-	68.0
58	University of Bristol	United Kingdom	82.9	55.9	69.9	64.3	-	67.9
59	The University of Auckland	New Zealand	63.6	77.4	58.5	-	96.5	67.8
60	University of Washington	United States	44.7	89.2	87.1	69.6	-	67.5
61	University of Illinois at Urbana-Champaign	United States	49.5	71.2	88.2	95.4	-	67.3
62	The University of Nottingham	United Kingdom	74.1	31.4	89.6	61.4	72.4	67.1
63	Rheinisch-Westfälische Technische Hochschule Aachen	Germany	96.6	31.0	93.5	-	-	66.9
64	University of Southern California	United States	48.3	98.3	79.3	51.8	-	66.4
65	Tokyo Institute of Technology	Japan	75.0	-	85.0	79.2	71.7	65.1
66	Australian National University (ANU)	Australia	81.4	53.5	53.8	54.8	70.6	65.0
66	Monash University	Australia	90.4	70.9	56.5	-	-	65.0
68	King's College London (KCL)	United Kingdom	82.4	48.5	51.7	53.0	86.4	64.9
69	CentraleSupélec	France	100.0	-	62.0	74.3	68.1	64.7
69	University of Technology Sydney (UTS)	Australia	82.6	33.4	63.1	69.1	77.5	64.7
71	Universidad de Navarra	Spain	76.0	-	76.8	81.0	77.2	64.4
71	Université PSL (Paris Sciences & Lettres)	France	99.2	53.5	65.2	-	-	64.4
73	Osaka University	Japan	61.7	-	93.6	89.2	76.0	64.3
74	California Institute of Technology (Caltech)	United States	77.1	33.4	88.1	71.3	-	63.9
75	Boston University	United States	59.9	73.3	62.9	-	-	63.6
75	KTH, Royal Institute of Technology	Sweden	70.8	49.1	61.1	77.5	-	63.6
77	RMIT University	Australia	62.1	35.5	86.3	-	90.7	63.4
78	University College Dublin (UCD)	Ireland	44.5	66.0	82.4	47.1	68.8	63.2
79	Universidad Politécnica de Madrid	Spain	48.0	51.5	93.2	68.3	-	62.9
80	Universitat de Barcelona (UB)	Spain	46.3	52.0	98.9	-	80.0	62.8
81	Chalmers University of Technology	Sweden	62.8	-	90.9	90.8	77.4	62.7
82	KAIST - Korea Advanced Institute of Science and Technology	South Korea	76.7	39.2	83.8	-	-	62.5
83	The University of Warwick	United Kingdom	94.5	54.3	-	65.0	-	62.1
84	Università di Bologna (UNIBO)	Italy	46.8	49.6	97.9	-	68.7	61.8
85	Ohio State University	United States	50.1	52.4	86.7	80.1	-	60.9
86	University of Birmingham	United Kingdom	76.2	38.6	59.2	58.8	-	60.7
87	University of Alberta	Canada	43.3	45.0	83.5	57.3	81.6	60.1
88	Durham University	United Kingdom	89.1	34.3	54.8	48.9	-	59.9
88	Yonsei University	South Korea	77.4	66.7	56.0	-	-	59.9
90	City University of Hong Kong	Hong Kong SAR	37.9	34.5	83.2	81.6	97.7	59.8
91	University of Cape Town	South Africa	41.2	91.5	-	64.5	95.6	59.6
92	Trinity College Dublin (TCD)	Ireland	48.2	92.6	-	-	92.8	59.4
93	Sapienza - Università di Roma	Italy	34.7	69.1	82.0	-	68.7	59.3
94	Universidad Complutense de Madrid (UCM)	Spain	65.1	75.7	56.7	-	-	59.1
95	Washington University in St. Louis	United States	-	57.3	86.1	97.3	71.4	58.8
96	Sungkyunkwan University	South Korea	79.0	27.5	55.9	-	96.0	58.6
97	Technische Universität Darmstadt	Germany	69.3	27.9	61.6	70.9	67.7	58.1
98	McMaster University	Canada	42.6	38.8	85.4	55.8	75.8	58.0
98	Nagoya University	Japan	35.7	-	90.5	97.9	83.0	58.0
98	Technische Universität Berlin	Germany	74.8	27.1	56.6	77.5	-	58.0



## Create | Innovate | Empower

A leading institution of higher education in the United Arab Emirates and across the region, Zayed University is distinguished for its dedication to research and scholarship that seeks to address the needs of a culturally diverse, technologically advanced, and increasingly global environment. We take pride in providing world-class undergraduate and graduate programs to both national and international students across two modern campuses in Abu Dhabi and Dubai.

Some of our research facilities include:

- Assistive Technology Resource Centers
- Cognition & Neuroscience Research Laboratory
- Bloomberg Virtual Trading Labs and CFA Training
- 3D Printing & Robotics Fabrication Laboratory
- Hyperspectral & Instrumentation Laboratories
- Cyber Security and Digital Forensics Laboratories
- Zayed University Center for Educational Innovation
- Marine and Coral Propagation Laboratory



A Community of  
500 Researchers

90% International  
Faculty from 60 Countries



Accredited by  
Middle States Commission on Higher Education



جامعة زايد  
ZAYED UNIVERSITY

2020 Rank	Institution	Location	Employer reputation	Alumni Outcomes	Partnerships with Employers	Employer - Student Connections	Graduate Employment Rate	Overall
101-110	Arizona State University	United States	-	34.7	98.3	99.7	-	57.5
101-110	Hanyang University	South Korea	61.8	29.5	78.6	64.4	-	56.8
101-110	Lomonosov Moscow State University	Russia	80.7	96.3	-	-	-	55.6
101-110	Macquarie University	Australia	40.2	49.3	66.3	-	96.6	55.5
101-110	Queen's University	Canada	57.9	71.1	54.4	-	-	56.9
101-110	Queensland University of Technology (QUT)	Australia	48.4	-	71.4	93.9	79.0	56.5
101-110	The Hong Kong Polytechnic University	Hong Kong SAR	39.5	44.6	52.6	94.5	90.5	55.7
101-110	Universidad Nacional Autónoma de México (UNAM)	Mexico	83.9	80.0	-	48.7	-	57.7
101-110	University of Southampton	United Kingdom	42.6	34.8	75.9	64.2	76.1	55.5
101-110	University of Virginia	United States	36.7	83.0	56.6	87.0	-	56.8
101-110	Wuhan University	China (mainland)	49.7	37.8	83.7	100.0	-	57.5
111-120	Georgetown University	United States	39.7	90.9	-	87.1	-	54.8
111-120	Indian Institute of Technology Bombay (IITB)	India	67.8	66.9	51.6	-	-	54.0
111-120	Loughborough University	United Kingdom	54.3	-	71.6	97.9	-	54.0
111-120	North Carolina State University	United States	-	31.0	92.6	98.0	83.1	54.6
111-120	Politecnico di Torino	Italy	53.7	-	77.0	46.4	99.6	54.6
111-120	Tel Aviv University	Israel	29.9	76.7	52.9	-	93.4	54.1
111-120	Universidad de Los Andes Colombia	Colombia	75.3	54.7	-	55.4	75.3	55.1
111-120	Universitat Politècnica de Catalunya	Spain	35.3	-	98.5	46.9	97.8	54.3
111-120	University of Florida	United States	33.5	66.0	74.2	68.1	-	54.1
121-130	Hokkaido University	Japan	44.2	-	71.3	98.2	66.0	51.8
121-130	Huazhong University of Science and Technology	China (mainland)	-	-	97.2	100.0	67.7	53.0
121-130	Ludwig-Maximilians-Universität München	Germany	81.5	47.4	55.3	-	-	53.5
121-130	Texas A&M University	United States	45.5	45.9	83.1	52.9	-	53.3
121-130	The University of Sheffield	United Kingdom	55.8	31.4	54.5	60.3	76.1	52.8
121-130	Università Cattolica del Sacro Cuore	Italy	41.6	-	77.5	89.3	68.7	53.4
121-130	University of Amsterdam	Netherlands	52.4	64.4	66.6	-	-	52.7
121-130	University of California, San Diego (UCSD)	United States	50.1	-	84.0	64.1	-	52.6
121-130	University of Minnesota	United States	-	54.6	95.4	57.9	-	53.6
121-130	Western University	Canada	56.1	72.3	-	-	-	53.3
131-140	Aarhus University	Denmark	43.0	33.6	94.1	-	-	51.4
131-140	Drexel University	United States	-	34.7	85.8	85.6	87.7	51.4
131-140	Katholieke Universiteit Leuven	Belgium	66.7	50.3	-	-	-	51.0
131-140	Kyushu University	Japan	45.4	-	81.1	87.2	-	48.5
131-140	Lund University	Sweden	56.7	68.2	-	58.8	-	49.8
131-140	Queen's University of Belfast	United Kingdom	37.4	-	73.2	79.7	77.2	48.5
131-140	Tongji University	China (mainland)	-	25.1	94.1	97.4	73.8	50.9
131-140	University of Calgary	Canada	40.9	34.4	76.4	-	-	49.2
131-140	University of Glasgow	United Kingdom	53.0	31.4	52.6	-	80.1	49.1
131-140	University of St Gallen (HSG)	Switzerland	70.3	87.4	-	47.1	-	50.4
141-150	Erasmus University Rotterdam	Netherlands	54.7	70.7	-	-	-	47.0
141-150	National Chiao Tung University	Taiwan	37.8	38.1	45.3	65.9	67.4	46.4
141-150	Sorbonne University	France	48.0	62.6	-	-	-	48.4
141-150	Tokyo University of Science	Japan	-	47.1	48.5	88.4	99.8	47.8
141-150	Universidad Autónoma de Madrid	Spain	59.2	24.9	65.7	-	-	46.9
141-150	Universidad Carlos III de Madrid	Spain	48.9	-	77.4	-	91.8	46.7
141-150	Universidad de Chile	Chile	92.1	64.0	-	-	-	46.8
141-150	Universitat Autònoma de Barcelona	Spain	31.2	-	91.0	-	91.3	48.1
141-150	Universiti Malaya (UM)	Malaysia	57.0	35.9	-	44.6	82.7	48.3
141-150	University of Bath	United Kingdom	63.5	31.4	-	55.0	68.4	46.4



# APPLE2019

*Asia Pacific*

26-28 November 2019  
Fukuoka International Convention Center  
Fukuoka, Japan

**Industrial Revolution 4.0 and Ageing Societies:  
The Changing Role of Universities in the Asia-Pacific**

Register now at  
[www.qsapple.org](http://www.qsapple.org)



Organizing Partner



**九州大学**  
KYUSHU UNIVERSITY



جامعة عجمان  
AJMAN UNIVERSITY

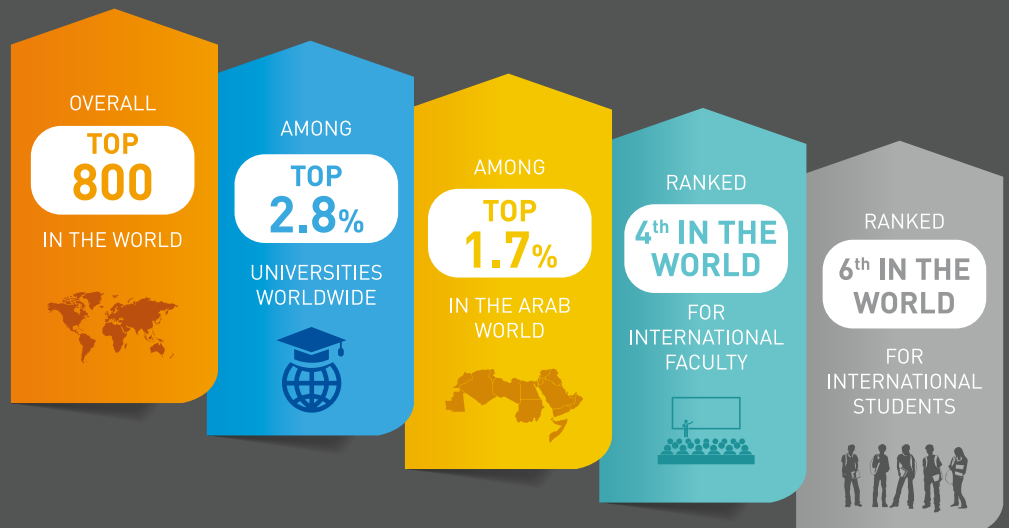
Delivering a  
world-class education  
in a global environment.

MAKE IT  
HAPPEN

Ajman-U.A.E.  
ajman.ac.ae



/ajmanuniversity



# Employability Matters

UCSI runs what is virtually Malaysia's largest university-industry network through its Co-Operative Placement (Co-Op) programme. At present, the Malaysia's best private university works with over 4,200 global companies to provide each student with at least two months of internships each year. Impressively, 97.8% of these world-renowned companies have shown a disposition to employ UCSI interns. The learning experience at UCSI is an exceptional one. Your time here will give the best of both worlds – the knowledge and the skills required to make the cut.



## WHAT OUR CO-OP PARTNERS SAY

**99.3%**  
are satisfied with  
performance of UCSI  
interns

**98.8%**  
of interns were  
prepared for work

**97.8%**  
would like to rehire  
UCSI interns

*Employers' Feedback 2017*



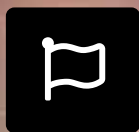
[ucsiuniversity.edu.my](http://ucsiuniversity.edu.my)



2020 Rank	Institution	Location	Employer reputation	Alumni Outcomes	Partnerships with Employers	Employer - Student Connections	Graduate Employment Rate	Overall
141-150	University of Copenhagen	Denmark	41.8	60.4	59.3	-	-	47.7
151-160	Chulalongkorn University	Thailand	43.3	86.9	-	-	-	45.9
151-160	Hitotsubashi University	Japan	63.2	32.5	-	91.8	78.4	45.2
151-160	Indian Institute of Technology Delhi (IITD)	India	59.8	53.8	-	56.2	-	45.3
151-160	Indiana University Bloomington	United States	25.4	63.9	-	57.2	77.7	46.3
151-160	The University of Western Australia (UWA)	Australia	62.2	65.6	-	-	-	45.8
151-160	Tufts University	United States	-	64.6	56.0	96.1	-	45.5
151-160	Universidad Nacional de Colombia	Colombia	79.8	32.1	-	-	98.0	45.4
151-160	Università degli Studi di Padova (UNIPD)	Italy	30.5	-	98.8	-	68.7	46.2
151-160	University of Kansas	United States	-	-	88.0	92.7	-	44.7
161-170	Ateneo de Manila University	Philippines	31.5	73.9	-	55.3	97.9	44.3
161-170	Dartmouth College	United States	30.2	76.2	-	82.9	-	44.5
161-170	Nanjing University	China (mainland)	33.8	29.6	-	99.1	71.8	43.7
161-170	National Cheng Kung University	Taiwan	37.6	-	54.0	98.5	-	44.3
161-170	Newcastle University	United Kingdom	57.0	-	48.5	61.3	-	44.2
161-170	Università di Pisa	Italy	-	-	91.1	49.0	68.7	44.2
161-170	University of Arizona	United States	-	45.6	77.6	54.4	-	44.0
161-170	University of Illinois, Chicago (UIC)	United States	25.9	40.9	49.5	88.7	-	43.7
161-170	University of Liverpool	United Kingdom	32.5	30.9	49.8	55.0	83.7	44.6
161-170	University of Surrey	United Kingdom	26.0	-	98.6	-	-	44.2
171-180	Charles University	Czech Republic	32.0	44.8	-	-	97.0	42.6
171-180	Hebrew University of Jerusalem	Israel	-	79.3	-	-	71.5	43.0
171-180	Indian Institute of Technology Madras (IITM)	India	41.4	35.2	-	-	100.0	42.6
171-180	Thammasat University	Thailand	-	75.7	-	50.5	87.1	42.8
171-180	The University of Adelaide	Australia	44.4	44.3	57.6	-	-	42.5
171-180	Université Catholique de Louvain (UCL)	Belgium	47.2	51.6	49.7	-	-	42.8
171-180	Université de Montréal	Canada	54.6	-	64.0	-	-	42.4
171-180	University of California, Davis (UCD)	United States	34.7	27.2	79.9	-	-	43.0
171-180	University of Wollongong	Australia	35.4	-	64.4	-	89.1	42.4
171-180	Xi'an Jiaotong University	China (mainland)	-	30.9	-	94.7	70.7	42.6
181-190	Beijing Institute of Technology	China (mainland)	-	-	84.5	99.2	-	40.6
181-190	Cardiff University	United Kingdom	40.1	-	51.2	-	83.7	41.1
181-190	Lehigh University	United States	-	37.4	48.5	84.8	74.4	40.8
181-190	Maastricht University	Netherlands	-	56.2	-	-	82.8	40.7
181-190	Saint-Petersburg State University	Russia	27.3	78.0	-	83.6	-	42.2
181-190	Technische Universität Dresden	Germany	66.1	-	60.2	-	-	40.4
181-190	Universität Wien	Austria	36.7	79.0	-	-	-	40.3
181-190	Université Libre de Bruxelles (ULB)	Belgium	52.5	54.3	-	-	-	40.2
181-190	University of The Witwatersrand	South Africa	29.7	94.2	-	-	-	40.2
181-190	University of Tsukuba	Japan	-	-	64.5	98.0	78.3	40.7
191-200	Lahore University of Management Sciences (LUMS)	Pakistan	35.1	46.8	-	59.0	91.7	38.4
191-200	Moscow State Institute of International Relations – MGIMO University	Russia	26.0	64.3	-	-	100.0	38.6
191-200	National Taiwan University of Science and Technology	Taiwan	-	29.1	-	74.7	89.6	38.9
191-200	The American University in Cairo	Egypt	34.5	55.8	-	76.6	-	39.1
191-200	Universität Stuttgart	Germany	57.3	-	51.0	-	-	38.6
191-200	Université de Montpellier	France	-	-	97.2	-	-	38.4
191-200	University of Delhi	India	40.6	97.1	-	-	-	39.1
191-200	University of Notre Dame	United States	30.1	67.9	-	-	-	39.1
191-200	University of Pittsburgh	United States	-	43.1	76.2	-	-	39.0
191-200	Virginia Polytechnic Institute (Virginia Tech)	United States	30.5	33.7	72.8	-	-	39.5



# The University Rating Shining a Light on Excellence



Increased  
**International  
Recognition**



Enhanced  
**Branding  
& Visibility**



**Areas of  
Excellence**  
highlighted

Learn more at [www.qs.com](http://www.qs.com)



Jump!CNU

A Leading University of Korea  
Leaping onto the World Stage

# CHUNGNAM NATIONAL UNIVERSITY

## Contact

99 Daehak-ro, Yuseong-gu, Daejeon 34134, Korea  
[www.cnu.ac.kr](http://www.cnu.ac.kr)



충남대학교  
CHUNGNAM NATIONAL UNIVERSITY

Korea No.1 University

# KYUNGPOOK NATIONAL UNIVERSITY

---



Creating New Trends and  
Setting New Standards,  
KNU is Leading the World.

**Contact** <http://en.knu.ac.kr>



**KNU** KYUNGPOOK  
NATIONAL UNIVERSITY



**REIMAGINE**  
EDUCATION



THE ALFRED WEST JR.  
**LEARNING LAB**

# We're reimagining education. Join us!

**REIMAGINE EDUCATION CONFERENCE & AWARDS**

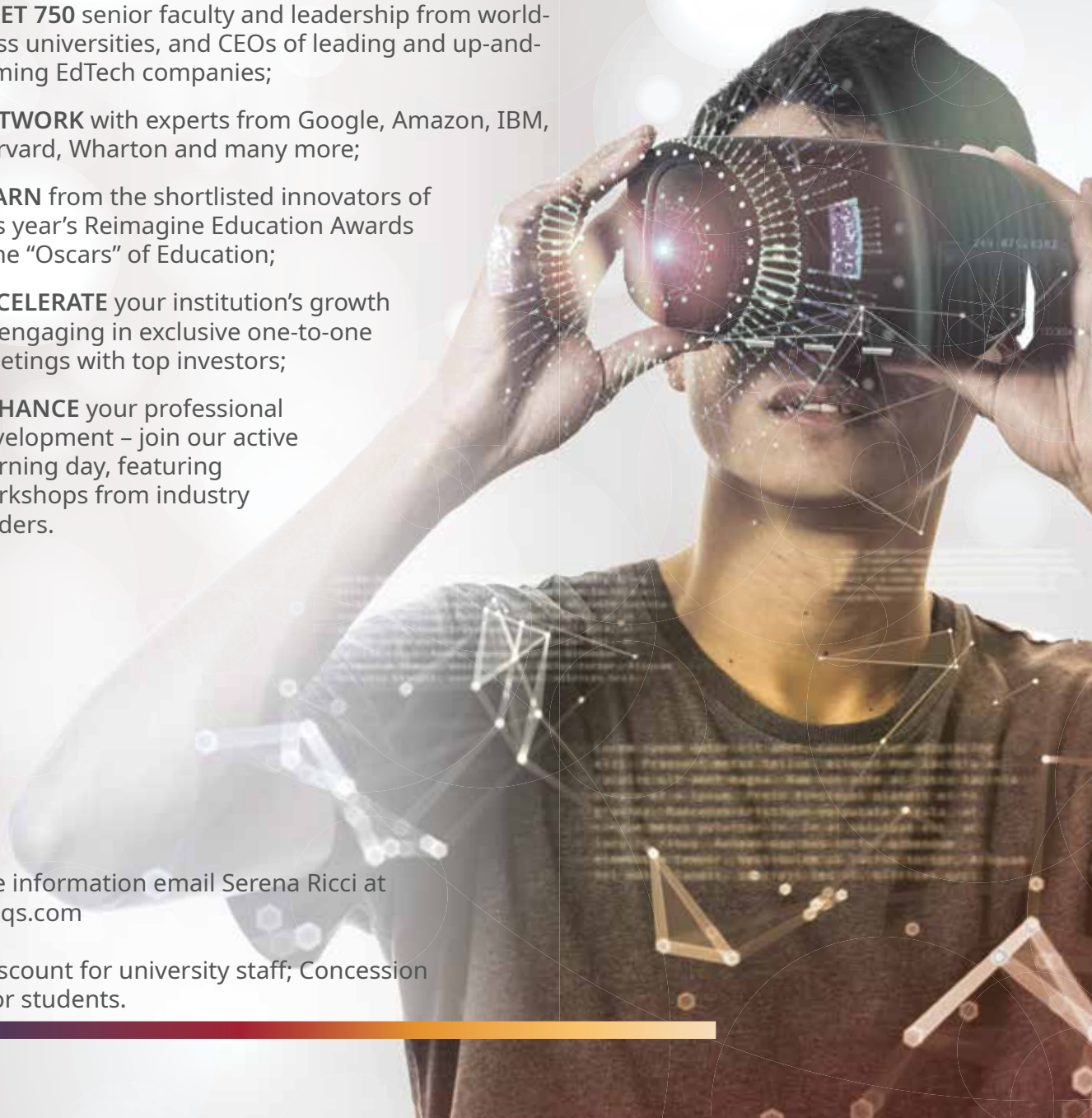
8-9-10 DECEMBER 2019 | LONDON

Secure your place: [www.reimagine-education.com](http://www.reimagine-education.com) \*

-  **MEET 750** senior faculty and leadership from world-class universities, and CEOs of leading and up-and-coming EdTech companies;
-  **NETWORK** with experts from Google, Amazon, IBM, Harvard, Wharton and many more;
-  **LEARN** from the shortlisted innovators of this year's Reimagine Education Awards – the “Oscars” of Education;
-  **ACCELERATE** your institution's growth by engaging in exclusive one-to-one meetings with top investors;
-  **ENHANCE** your professional development – join our active learning day, featuring workshops from industry leaders.

For more information email Serena Ricci at [serena@qs.com](mailto:serena@qs.com)

\*15% discount for university staff; Concession tickets for students.



# Imagine the unimaginable.

Inspiring transformative applications for artificial intelligence.

## INNOVATE WITH US

